

Meritt

2016

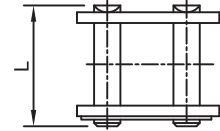
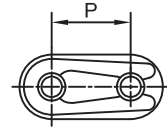
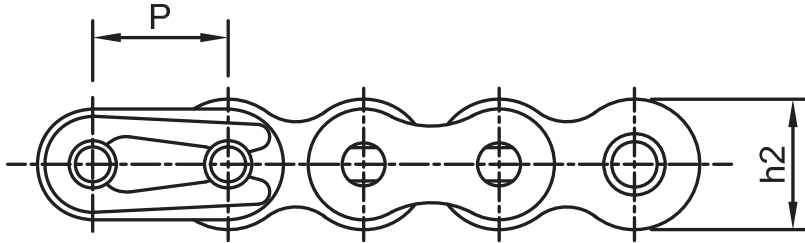
STAINLESS STEEL

**ROLLER & CONVEYOR CHAINS
AND SPROCKETS**

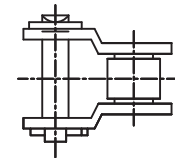
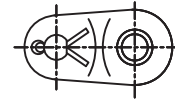
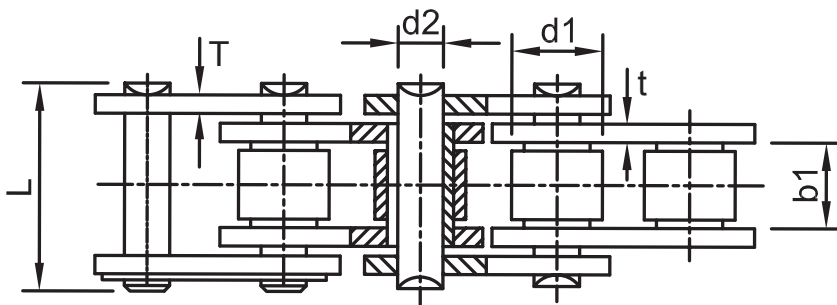


**FOR FOOD PLANT,
WIREMESH CONVEYOR BELT,
FURNACE, ETC.**

Stainless Steel Chains are suitable for corrosive conditions involving food, chemicals, pharmaceuticals, etc. and also suitable for high and low temperature conditions.



CONNECTING LINK



HALF LINK

CHAIN NO	PITCH (P)	ROLLER DIA (d1) [Max]	WIDTH BETWEEN INNER LINK (b1)	PIN DIA. (D2)	PIN LENGTH [L]	INNER PLATE DEPTH (h2)	PLATE THICKNESS t/T (Max)	ULTIMATE TENSILE STRENGTH Kg.	MAX WORKING LOAD Kg.	WT. [Kg./m]
BRITISH STANDARD SIMPLEX CHAIN										
*06BSS - 1	9.525	6.35	5.72	3.28	13.2	8.2	1.3	620	30	0.41
08BSS - 1	12.70	8.51	7.75	4.45	16.7	11.8	1.6	1200	50	0.70
10BSS - 1	15.875	10.16	9.65	5.08	19.5	14.6	1.7	1450	65	0.94
12BSS - 1	19.05	12.07	11.68	5.72	22.5	16.0	1.85	1850	95	1.16
16BSS - 1	25.40	15.88	17.02	8.28	36.1	20.9	4.1 / 3.1	4000	170	2.13
AMERICAN STANDARD SIMPLEX CHAIN										
35SS - 1	9.525	5.08	4.68	3.58	12.4	9.0	1.3	550	25	0.35
40SS - 1	12.70	7.92	7.85	3.96	16.6	12.0	1.5	970	45	0.65
50SS - 1	15.875	10.16	9.40	5.08	20.7	15.0	2.0	1530	70	1.04
60SS - 1	19.05	11.91	12.57	5.94	25.9	18.0	2.4	2180	110	1.55
80SS - 1	25.40	15.88	15.57	7.92	32.7	23.5	3.2	3700	175	2.63

* Straight Side Plate Chain

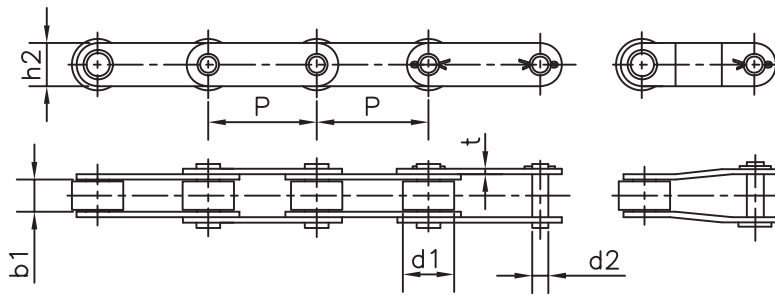
ALL DIMENSIONS ARE IN MM

NOTE:

THE CHAINS ARE ALSO AVAILABLE IN SS-316, SS-316L, ETC.

Dimensions subject to change. Certified dimensions furnished upon request.

Stainless Steel Double Pitch Roller Conveyor Chains

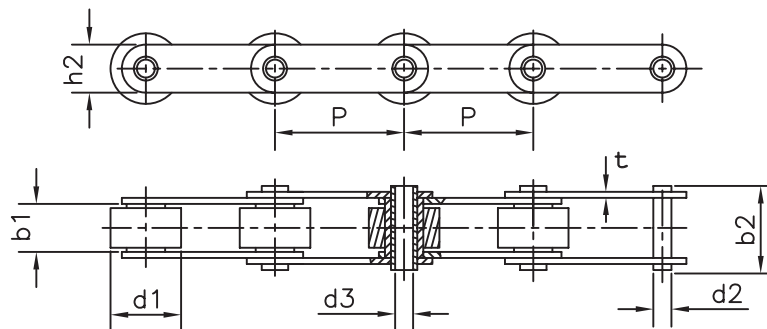


Meritt Chain No.	Pitch	Roller dia	Pin dia	Width between inner plates	Inner Plate depth	Plate Thk.	Breaking load	Max. working load	Weight per meter
	P mm	d1(Max) mm	d2 mm	b1(min) mm	h2 mm	t mm	Q(Min) KN	KN	q kg/m
C2042SS	25.4	15.88	3.96	7.85	12	1.5	9.6	1.40	0.87
C2052SS	31.75	19.05	5.08	9.40	15	2.0	15.2	2.25	1.31
C2062SS	38.1	22.23	5.94	12.57	18	2.4	21.7	3.25	1.90
C2062HSS						3.1			
C2082SS	50.8	28.58	7.92	15.75	23.5	3.1	38.9	5.80	3.21
C2082HSS						4.0			
C2102SS	63.5	39.67	9.52	18.90	30	4.0	60.0	9.10	5.33
C2102HSS						4.8			
C2122SS	76.2	44.45	11.10	25.22	35.8	4.8	78.4	11.80	7.71
C2122HSS						5.6			

NOTE:

Above chains are available with nylon roller also. Above chains are available in carbon steel also.

Stainless Steel Hollow Pin Roller Conveyor Chains



Meritt Chain No.	Pitch	Roller outer dia	Width between inner plates	Plate depth	Plate Thk.	Pin outer dia	Pin inner dia	Pin length	Breaking load
	P mm	d1(Max) mm	b1(Min) mm	h2 mm	t mm	d2 mm	d3(Min) mm	b2 mm	Q(Min) KN
C2042HPSS	25.4	15.88	7.85	12	1.5	5.63	4	16.6	6.8
C2052HPSS	31.75	19.05	9.4	15	2.0	7.06	5.10	20.5	10.6
C2062HPSS	38.1	22.23	12.57	18	2.4	8.33	6.10	25.3	16.1
C2082HPSS	50.8	28.58	15.75	23.6	3.1	11.11	8.05	32.7	26.8
C2062HHPSS	38.1	22.23	12.57	18	3.1	8.33	6.10	25.3	16.1
C2082HHPSS	50.8	28.58	15.75	23.6	4.0	11.11	8.05	32.7	26.8

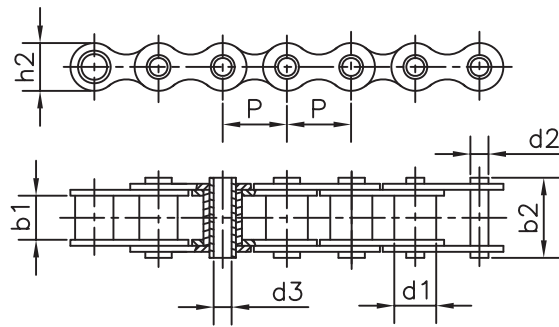
NOTE:

Above chains are available in carbon steel also.

Dimensions subject to change. Certified dimensions furnished upon request.

ALL DIMENSIONS ARE IN MM

Type A



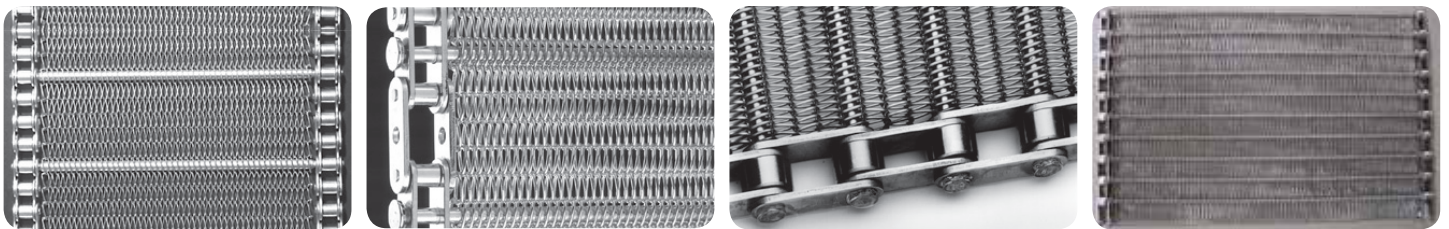
Hollow Pin Chain, attaching attachments and slats, can be used on light type conveyor machinery such as food, tobacco, print and package etc.

Type A - With Roller without bush.

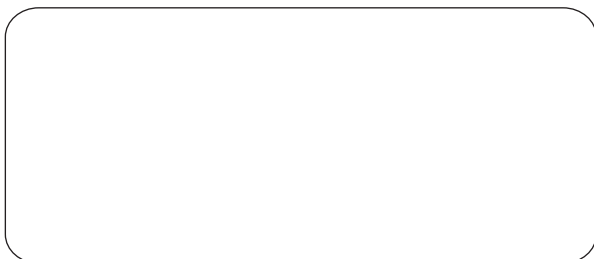
Meritt Chain No.	Pitch P mm	Roller dia d1(Max) mm	Width between inner plates b1(Min) mm	Plate depth h2 mm	Pin outer dia d2 mm	Pin inner dia d3(Min) mm	Pin length b2 mm	Breaking load Q(Min) KN	Type
CARBON STEEL HOLLOW PIN CHAIN									
08BHP	12.7	8.51	7.75	12.1	6.38	4.6	16.5	10.8	Type A
10BHP	15.875	10.16	9.65	14.6	7.03	5.13	19.2	13	
12BHP	19.05	12.07	11.68	15.7	6.5	5.9	21.6	24.5	
16BHP	25.4	15.88	17.02	21.0	11.5	8.4	34.0	32.2	
STAINLESS STEEL HOLLOW PIN CHAIN									
08BHPSS	12.7	8.51	7.75	12.1	6.38	4.6	16.5	6.0	Type A
10BHPSS	15.875	10.16	9.65	14.6	7.03	5.13	19.2	8.1	
12BHPSS	19.05	12.07	11.68	15.7	6.5	5.9	21.6	13.3	
16BHPSS	25.4	15.88	17.02	21.0	11.5	8.4	34.0	20.4	

Dimensions subject to change. Certified dimensions furnished upon request.

Applications



Distributed by



T.R.A.N.S.M.I.S.S.I.O.N.S

157/159, Narayan Dhuru Street,
Behind Nagdevi Street, Mumbai - 400 003, INDIA.
Telephone - 022 - 2344 4956 / 2344 2857 / 2342 8342
Fax - 91-22-2341 4107 / 2341 0238
E-mail: meritt2@vsnl.net • sales@meritt.in
Website: www.meritt.in